

Foxfab Disconnects

FFEB-A1 Series



The FFEB-A1 Series Enclosed Breakers allow safe load make/break operation. Assemblies are available with up to 1200A mains and are ETL-certified.

Standard Features/Specifications

- Weatherproof Type 3R Enclosure
- Steel Construction with ANSI 61 Grey Powder Coat Finish
- Wall-Mount or Free-Standing Design
- Hinged Single Door with Gaskets and Pad-Lockable Latch
- Main Breaker
- Mechanical Line and Load Lugs
- Three Phase - 120/208/480/600VAC
- ETL Certified Assembly

Options

- Type 1, 4, or 4X Enclosure
- Aluminum or Stainless Steel Construction
- Custom Powder Coat Finishes
- Auxiliary Contacts
- Single Phase, 120/240VAC

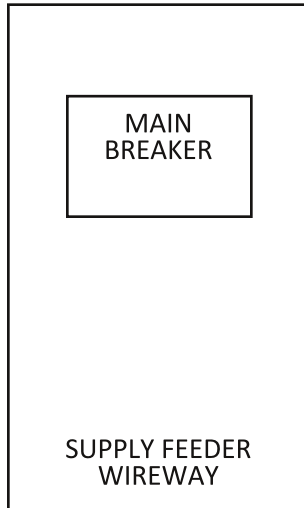
Rev 0.1

Foxfab Disconnects

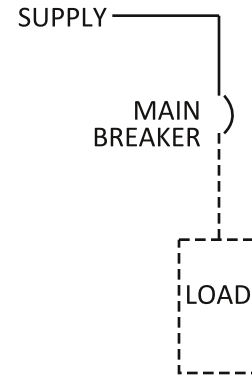
FFEB-A1 Series



Panel Layouts



One-Line Diagram



Typical Configurations

PART NO.	PHASE	AMP	VOLTAGE	H (")	W (")	D (")
FFEB-A1-1P0100A	1	100	120/240	24	10	6
FFEB-A1-1P0200A	1	200	120/240	30	16	8
FFEB-A1-1P0400A	1	400	120/240	48	24	10
FFEB-A1-1P0600A	1	600	120/240	60	30	12
FFEB-A1-1P0800A	1	800	120/240	72	30	12
FFEB-A1-1P1000A	1	1000	120/240	84	38	12
FFEB-A1-1P1200A	1	1200	120/240	84	38	12
FFEB-A1-3P0100A	3	100	120/208/480/600	24	10	6
FFEB-A1-3P0200A	3	200	120/208/480/600	30	16	8
FFEB-A1-3P0400A	3	400	120/208/480/600	48	24	10
FFEB-A1-3P0600A	3	600	120/208/480/600	60	30	12
FFEB-A1-3P0800A	3	800	120/208/480/600	72	30	12
FFEB-A1-3P1000A	3	1000	120/208/480/600	84	38	12
FFEB-A1-3P1200A	3	1200	120/208/480/600	84	38	12