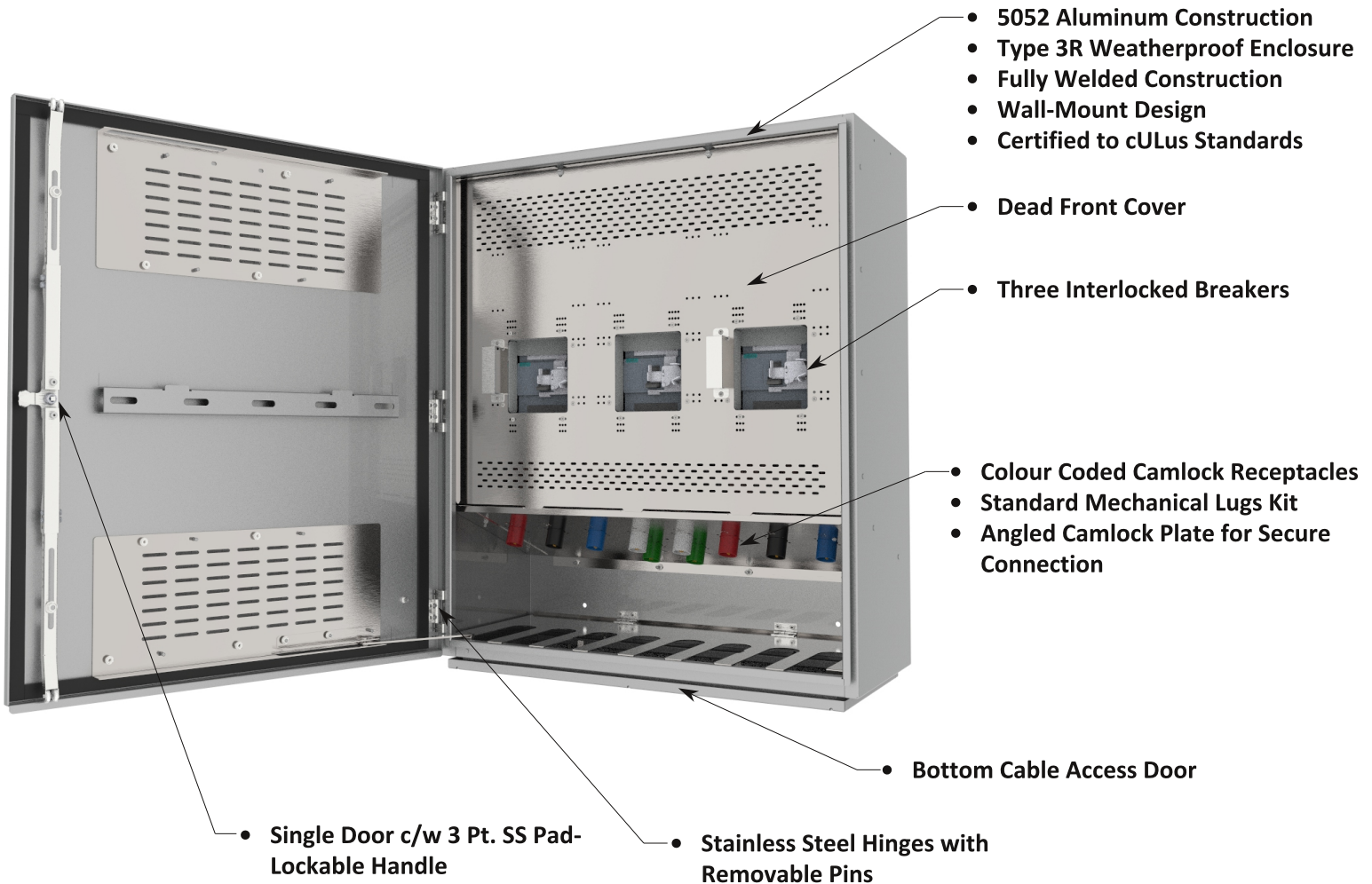


Connection Cabinets

FFCC-S1 Series



The FFCC-S1 Series 3-Way Manual Transfer Switch Connection Cabinet allows for maximum redundancy when considering load bank testing and portable generation. This unit allows for isolated load bank testing which gives the facility the ability to have a portable generator tied in at the same time. These units are equipped with colour coded camlock receptacles allowing for quick and easy load bank or portable generator connection. Assemblies are available with up to 1200A mains, certified to cULus standards and NEC 700.3F compliant.



Max Ratings

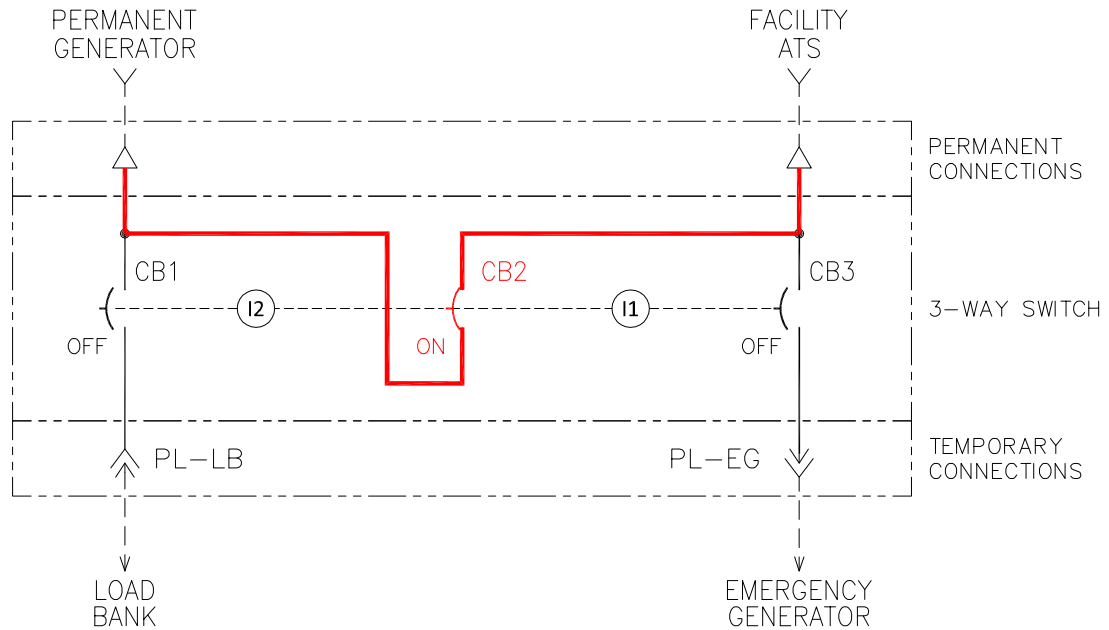
- 1200A
- 600VAC

Dimensions

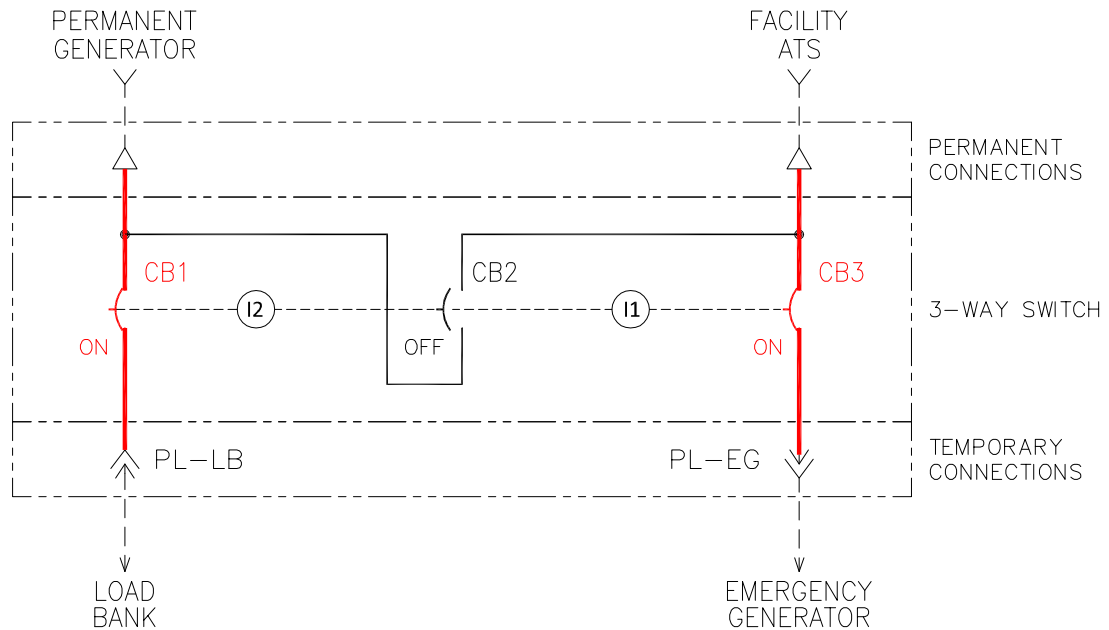
- 42"H x 36"W x 16"D (100A - 600A)
- 60"H x 48"W x 24"D (800A - 1000A)
- 72"H x 36"W x 24"D (1200A)
- 4P units, consult with factory

Rev 2.0

One-Line Diagrams



NORMAL OPERATION

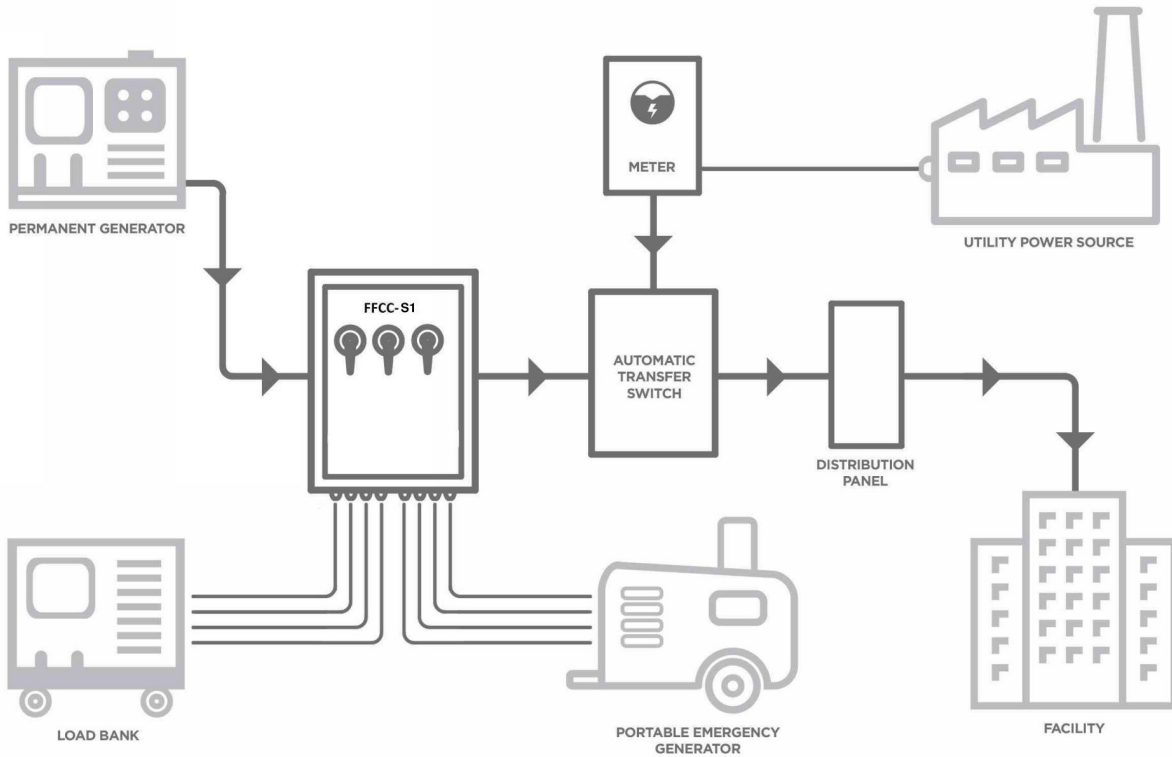


LOAD BANK TESTING

Connection Cabinets FFCC-S1 Series



Application Diagram



Connection Cabinets

FFCC-S1 Series



Product Selector

