



Foxfab
POWER SOLUTIONS

GENERATOR & LOAD BANK CONNECTION SOLUTIONS

BENEFITS OF GENERATOR QUICK CONNECT PRODUCTS

Foxfab has a range of generator quick connect products that can be used in a variety of critical power applications. These products have been engineered to allow easy, safe, and quick access to power up a facility with a temporary or roll up generator. These could be used during construction, permanent generator maintenance, or storm power situations.

Problems for facilities without Generator Tie-in equipment include:

- › Field modifications to existing switchgear
- › Building modifications to allow wiring access, drilling walls, coring floors
- › Running cables through public areas, windows, doors
- › Public safety and security

Benefits of using permanent Foxfab Generator Connection Solutions:

- › Safe, clean, and permanent install
- › Installed under non-chaotic conditions
- › A planned design minimizes or eliminates possible public access to emergency equipment
- › Much faster connection speed to get online
- › Easy for building operations to connect to



TABLE OF CONTENTS

COMMERCIAL GRADE CONNECTION CABINETS

Foxfab's Commercial Grade Connection Cabinets offer standard features such as steel construction and are focused on an economical design.

FFCC-A1	5
FFCC-A2	6
FFCC-A3	7
FFCC-CLC	8

SPEC GRADE CONNECTION CABINETS

Foxfab's Spec Grade Connection Cabinets come with premium design features including aluminum or stainless steel construction in Type 3R ratings.

FFCC-B1	9
FFCC-B2	10
FFCC-C1	11
FFCC-C2	12
FFCC-C3	13
FFCC-C4	14
FFCC-DX	15
FFCC-P1	16
FFCC-P2	17
FFCC-S1	18
FFCC-S2	19
FFIS-C3	21
FFIS-P2	22

TRANSFER SWITCHES

Foxfab's line of Fused and Non-Fused Manual Transfer Switches are available with optional indicating lights, giving a quick visual status on normal/emergency supply selection. Units are available up to 4000A.

FFTS-M2N	25
FFTS-M2F	26

TABLES	27
---------------	----

ACCESSORIES	29
--------------------	----

ABOUT FOXFAB	31
---------------------	----

KVA/KW AMPERAGE CHART (80% POWER FACTOR)

kVA	kW	208V	240V	380V	400V	480V	600V	2400V	4160V
8	6.3	17.5	15.2	9.6	9.1	7.6	6.1		
9.4	7.5	26.1	22.6	14.3	13.6	11.3	9.1		
12.5	10	34.7	30.1	19.2	18.2	15.1	12		
18.7	15	52	45	28.8	27.3	22.5	18		
25	20	69.5	60.2	38.4	36.4	24	6	4.4	
31.3	25	87	75.5	48	45.5	37.8	30	7.5	4.4
37.5	30	104	90.3	57.6	54.6	45.2	36	9.1	5.2
50	40	139	120	77	73	60	48	12.1	7
62.5	50	173	152	96	91	76	61	15.1	8.7
75	60	208	181	115	109	91	72	18.1	10.5
93.8	75	261	226	143	136	113	90	22.6	13
100	80	278	240	154	146	120	96	21.1	13.9
125	100	347	301	192	182	150	120	30	17.5
156	125	433	375	240	228	188	150	38	22
187	150	520	450	288	273	225	180	45	26
219	175	608	527	335	318	264	211	53	31
250	200	694	601	384	364	301	241	60	35
312	250	866	751	480	455	376	300	75	43
375	300	1040	903	576	546	451	361	90	52
438	350	1220	1053	672	637	527	422	105	61
500	400	1390	1203	770	730	602	481	120	69
625	500	1735	1504	960	910	752	602	150	87
750	600	2080	1803	1150	1090	902	721	180	104
875	700	2430	2104	1344	1274	1052	842	210	121
1000	800	2780	2405	1540	1460	1203	962	241	139
1125	900	3120	2709	1730	1640	1354	1082	271	156
1250	1000	3470	3009	1920	1820	1504	1202	301	174
1563	1250	4350	3765	2400	2280	1885	1503	376	218
1875	1500	5205	4520	2880	2730	2260	1805	452	261
2188	1750		5280	3350	3180	2640	2106	528	304
2500	2000		6020	3840	3640	3015	2405	602	348
2812	2250		6780	4320	4095	3400	2710	678	

CAMLOCK COLOUR GUIDE

USA						
Voltage	Ground	Neutral	L1	L2	L3	
120/240	GRN	WHT	BLK	RED		
240V	GRN		BLK	RED	BLU	
208Y/120	GRN	WHT	BLK	RED	BLU	
480Y/277	GRN	WHT	BRN	ORG	YEL	
480V	GRN		BRN	ORG	YEL	

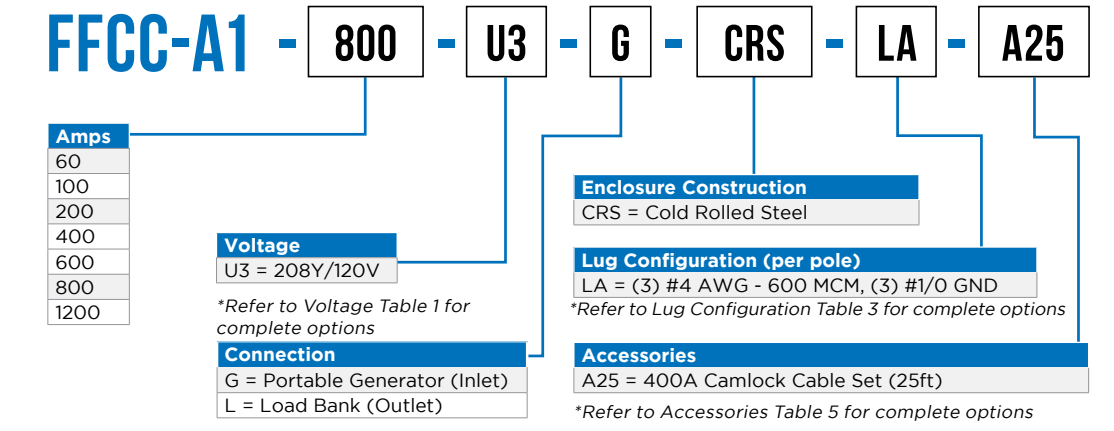
CANADA						
Voltage	Ground	Neutral	L1	L2	L3	
120/240	GRN	WHT	RED	BLK		
240V	GRN		RED	BLK	BLU	
208Y/120	GRN	WHT	RED	BLK	BLU	
600Y/347	GRN	WHT	RED	BLK	BLU	
600V	GRN		RED	BLK	BLU	

FFCC-A1

CONNECTION CABINET 60A-1200A (CAMLOCK CONNECTIONS)

- Features:**
- › Steel construction
 - › Type 3R weatherproof enclosure
 - › Wall mount design
 - › Colour coded camlock receptacles
 - › Mechanical lugs for facility connections as per standard lug kits
 - › Configurable for Generator (Inlet) or Load Bank (Outlet)
 - › Rated up to 600VAC
 - › cULus Listed

- Dimensions:**
- › 30"H x 24"W x 8"D (60A - 400A)
 - › 36"H x 30"W x 16"D (600A - 1200A)



FFCC-A2

CONNECTION CABINET W/
MANUAL TRANSFER SWITCH
OR ROTARY DISCONNECT
100A-1200A
(CAMLOCK CONNECTIONS)

Features:

- › Steel construction
- › Type 3R weatherproof enclosure
- › Wall mount design
- › Colour coded camlock receptacles
- › Mechanical lugs for facility connections as per standard lug kits
- › Manual Transfer Switch or Rotary Disconnect
- › Configurable for Generator (Inlet) or Load Bank (Outlet)
- › Rated up to 600VAC
- › cULus Listed

Dimensions:

- › 36"H x 30"W x 16"D (100A - 200A)
- › 50"H x 30"W x 16"D (260A - 400A)
- › 60"H x 36"W x 24"D (600A - 1200A)



FFCC-A2 - 800 - T - U3 - G - CRS - LA - A25

Amps
100
200
400
600
800
1200

Type
T = Manual Transfer Switch
D = Rotary Disconnect

Voltage
U3 = 208Y/120V

*Refer to Voltage Table 1 for complete options

Connection
G = Portable Generator (Inlet)
L = Load Bank (Outlet)

Enclosure Construction
CRS = Cold Rolled Steel

Lug Configuration (per pole)
LA = (3) #4 AWG - 600 MCM, (3) #1/0 GND

*Refer to Lug Configuration Table 3 for complete options

Accessories
A25 = 400A Camlock Cable Set (25ft)

*Refer to Accessories Table 5 for complete options

FFCC-A3

CONNECTION CABINET W/
MOLDED CASE BREAKER OR
SWITCH 100A-1200A
(CAMLOCK CONNECTIONS)

Features:

- › Steel construction
- › Type 3R weatherproof enclosure
- › Wall mount design
- › Colour coded camlock receptacles
- › Mechanical lugs for facility connections as per standard lug kits
- › Molded Case Breaker or Switch
- › Configurable for Generator (Inlet) or Load Bank (Outlet)
- › Rated up to 600VAC
- › cULus Listed

Dimensions:

- › 30"H x 24"W x 8"D (100A - 250A)
- › 42"H x 30"W x 16"D (400A)
- › 60"H x 36"W x 24"D (600A - 1200A)



FFCC-A3 - 800 - TM - U3 - G - CRS - LA - A25

Amps
100
200
400
600
800
1200

C.B. Trip Unit
TM = Thermal Magnetic
LS = Electronic LS
LSI = Electronic LSI
LSG = Electronic LSG
LSIG = Electronic LSIG
KS = Molded Case Switch

Voltage
U3 = 208Y/120V

*Refer to Voltage Table 1 for complete options

Connection
G = Portable Generator (Inlet)
L = Load Bank (Outlet)

Enclosure Construction
CRS = Cold Rolled Steel

Lug Configuration (per pole)
LA = (3) #4 AWG - 600 MCM, (3) #1/0 GND

*Refer to Lug Configuration Table 3 for complete options

Accessories
A25 = 400A Camlock Cable Set (25ft)

*Refer to Accessories Table 5 for complete options

FFCC-CLC

COMPACT CONNECTION CABINET 100A-3200A (LUG CONNECTIONS)

Features:

- › Steel construction
- › Type 3R weatherproof enclosure
- › Compact wall mount design
- › Mechanical lugs for generator/load bank and facility connections as per standard lug kits
- › Copper bussing
- › Rated up to 600VAC
- › cULus Listed

Dimensions:

- › 36"H x 30"W x 16"D (100A - 800A)
- › 60"H x 48"W x 16"D (1200A - 3200A)



FFCC-CLC - 400 - V3 - CRS - LA - A25

Amps
100
200
400
600
800
1200
1600
2000
2400
2800
3200

Voltage

V3 = 208Y/120V

*Refer to Voltage Table 1 for complete options

Enclosure Construction

CRS = Cold Rolled Steel

Lug Configuration (per pole)

LA = (2) #6 AWG - 250 MCM, (2) #2 GND

*Refer to Lug Configuration Table 3 for complete options

Accessories

A25 = 400A Camlock Cable Set (25ft)

*Refer to Accessories Table 5 for complete options

FFCC-B1

CONNECTION CABINET 400A-4000A (CAMLOCK CONNECTIONS)

Features:

- › Aluminum or stainless steel construction
- › Type 3R weatherproof enclosure
- › Wall mount design
- › Front, side and bottom access doors
- › Colour coded camlock receptacles
- › Mechanical lugs for facility connections as per standard lug kits
- › Copper bussing
- › Ideal for bottom cable entry installations
- › Configurable for Generator (Inlet) or Load Bank (Outlet)
- › Rated up to 600VAC
- › cULus Listed

Dimensions:

- › 44"H x 40"W x 14"D (400A - 1600A)
- › 48"H x 50"W x 16"D (2000A - 2400A)
- › 60"H x 50"W x 24"D (2800A - 4000A)



FFCC-B1 - 2000 - U3 - G - ALU - LA - A25

Amps
400
800
1200
1600
2000
2400
2800
3200
3600
4000

Voltage

U3 = 208Y/120V

*Refer to Voltage Table 1 for complete options

Connection

G = Portable Generator (Inlet)

L = Load Bank (Outlet)

Enclosure Construction

ALU = 5052 Aluminum

304 = 304 Stainless Steel

316 = 316 Stainless Steel

Lug Configuration (per pole)

LA = (6) #4 AWG - 600 MCM, (6) #1/0 GND

*Refer to Lug Configuration Table 3 for complete options

Accessories

A25 = 400A Camlock Cable Set (25ft)

*Refer to Accessories Table 5 for complete options

FFCC-B2

CONNECTION CABINET 400A-4000A (LUG CONNECTIONS)

Features:

- › Aluminum or stainless steel construction
- › Type 3R weatherproof enclosure
- › Wall mount design
- › Front, side and bottom access doors
- › Mechanical lugs for facility connections as per standard lug kits
- › Copper bussing
- › Ideal for bottom cable entry installations
- › Rated up to 600VAC
- › cULus Listed

Dimensions:

- › 44"H x 40"W x 14"D (400A - 1600A)
- › 48"H x 50"W x 16"D (2000A - 2400A)
- › 60"H x 50"W x 24"D (2800A - 4000A)



FFCC-B2 - 800 - V7 - ALU - LA - A25

Amps
400
800
1200
1600
2000
2400
2800
3200
3600
4000

Voltage

V7 = 600V

*Refer to Voltage Table 1 for complete options

Enclosure Construction

ALU = 5052 Aluminum
304 = 304 Stainless Steel
316 = 316 Stainless Steel

Lug Configuration (per pole)

LA = (3) #4 AWG - 600 MCM, (3) #1/0 GND

*Refer to Lug Configuration Table 3 for complete options

Accessories

A25 = 400A Camlock Cable Set (25ft)

*Refer to Accessories Table 5 for complete options

FFCC-C1

CONNECTION CABINET 60A-2000A (CAMLOCK CONNECTIONS)

Features:

- › Aluminum or stainless steel construction
- › Type 3R weatherproof enclosure
- › Wall mount design
- › Colour coded camlock receptacles
- › Angled camlock plate
- › Cable holder to prevent tampering or theft
- › Mechanical lugs for facility connections as per standard lug kits
- › Configurable for Generator (Inlet) or Load Bank (Outlet)
- › Rated up to 600VAC
- › cULus Listed

Dimensions:

- › 30"H x 24"W x 8"D (60A - 400A)
- › 42"H x 30"W x 16"D (600A - 1200A)
- › 42"H x 36"W x 16"D (1600A - 2000A)



FFCC-C1 - 800 - U3 - G - ALU - LA - A25

Amps
60
100
200
400
600
800
1200
1600
2000

Voltage

U3 = 208Y/120V

*Refer to Voltage Table 1 for complete options

Connection

G = Portable Generator (Inlet)
L = Load Bank (Outlet)

Enclosure Construction

ALU = 5052 Aluminum
304 = 304 Stainless Steel
316 = 316 Stainless Steel

Lug Configuration (per pole)

LA = (3) #4 AWG - 600 MCM, (3) #1/0 GND

*Refer to Lug Configuration Table 3 for complete options

Accessories

A25 = 400A Camlock Cable Set (25ft)

*Refer to Accessories Table 5 for complete options

FFCC-C2

CONNECTION CABINET W/
MANUAL TRANSFER SWITCH
OR ROTARY DISCONNECT
100A-1200A
(CAMLOCK CONNECTIONS)

Features:

- › Aluminum or stainless steel construction
- › Type 3R weatherproof enclosure
- › Wall mount design
- › Colour coded camlock receptacles
- › Angled camlock plate
- › Cable holder to prevent tampering or theft
- › Mechanical lugs for facility connections as per standard lug kits
- › Manual Transfer Switch or Rotary Disconnect
- › Configurable for Generator (Inlet) or Load Bank (Outlet)
- › Rated up to 600VAC
- › cULus Listed

Dimensions:

- › 30"H x 24"W x 12"D (100A - 200A)
- › 42"H x 30"W x 16"D (260A - 400A)
- › 60"H x 36"W x 24"D (600A - 1200A)



FFCC-C2 - 800 - T - U3 - G - ALU - LA - A25

Amps
100
200
400
600
800
1200

Type
T = Manual Transfer Switch
D = Rotary Disconnect

Voltage
U3 = 208Y/120V

*Refer to Voltage Table 1 for complete options

Connection
G = Portable Generator (Inlet)
L = Load Bank (Outlet)

Enclosure Construction
ALU = 5052 Aluminum
304 = 304 Stainless Steel
316 = 316 Stainless Steel

Lug Configuration (per pole)
LA = (3) #4 AWG - 600 MCM, (3) #1/0 GND

*Refer to Lug Configuration Table 3 for complete options

Accessories
A25 = 400A Camlock Cable Set (25ft)

*Refer to Accessories Table 5 for complete options

FFCC-C3

CONNECTION CABINET W/
MOLDED CASE BREAKER OR
SWITCH 100A-1200A
(CAMLOCK CONNECTIONS)

Features:

- › Aluminum or stainless steel construction
- › Type 3R weatherproof enclosure
- › Wall mount design
- › Colour coded camlock receptacles
- › Angled camlock plate
- › Cable holder to prevent tampering or theft
- › Mechanical lugs for facility connections as per standard lug kits
- › Molded Case Breaker or Switch
- › Configurable for Generator (Inlet) or Load Bank (Outlet)
- › Rated up to 600VAC
- › cULus Listed

Dimensions:

- › 30"H x 24"W x 8"D (100A - 250A)
- › 42"H x 30"W x 16"D (400A)
- › 60"H x 36"W x 24"D (600A - 1200A)



FFCC-C3 - 800 - TM - U3 - G - ALU - LA - A25

Amps
100
200
400
600
800
1200

C.B. Trip Unit
TM = Thermal Magnetic
LS = Electronic LS
LSI = Electronic LSI
LSG = Electronic LSG
LSIG = Electronic LSIG
KS = Molded Case Switch

Enclosure Construction
ALU = 5052 Aluminum
304 = 304 Stainless Steel
316 = 316 Stainless Steel

Lug Configuration (per pole)
LA = (3) #4 AWG - 600 MCM, (3) #1/0 GND

*Refer to Lug Configuration Table 3 for complete options

Voltage
U3 = 208Y/120V

*Refer to Voltage Table 1 for complete options

Connection
G = Portable Generator (Inlet)
L = Load Bank (Outlet)

Accessories
A25 = 400A Camlock Cable Set (25ft)

*Refer to Accessories Table 5 for complete options

FFCC-C4

CONNECTION CABINET W/
POSI-LOK 200A-1200A
(CAMLOCK CONNECTIONS)

Features:

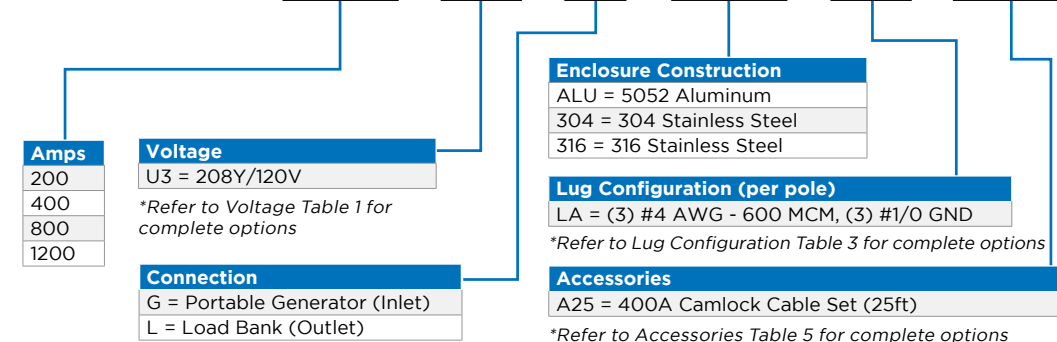
- › Aluminum or stainless steel construction
- › Type 3R weatherproof enclosure
- › Wall mount design
- › Colour coded camlock receptacles
- › Angled camlock plate
- › Cable holder to prevent tampering or theft
- › Mechanical lugs for facility connections as per standard lug kits
- › Posi-lok power distribution system
- › Configurable for Generator (Inlet) or Load Bank (Outlet)
- › Rated up to 600VAC
- › cULus Listed

Dimensions:

- › 42"H x 30"W x 24"D (200A - 400A)
- › 60"H x 36"W x 24"D (800A - 1200A)



FFCC-C4 - 800 - U3 - G - ALU - LA - A25



FFCC-DX

CONNECTION CABINETS
60A-1200A
(CAMLOCK CONNECTIONS)

Features:

- › See features of FFCC-CX counterparts.
- › Bottom cable entry for permanent facility cables

Dimensions:

- › Deeper variants of FFCC-CX models

FFCC-D1

- › 30"H x 24"W x 12"D (60A - 400A)
- › 42"H x 30"W x 24"D (600A-1200A)

FFCC-D2

- › 42"H x 30"W x 24"D (100A - 400A)
- › 60"H x 36"W x 24"D (600A - 1200A)

FFCC-D3

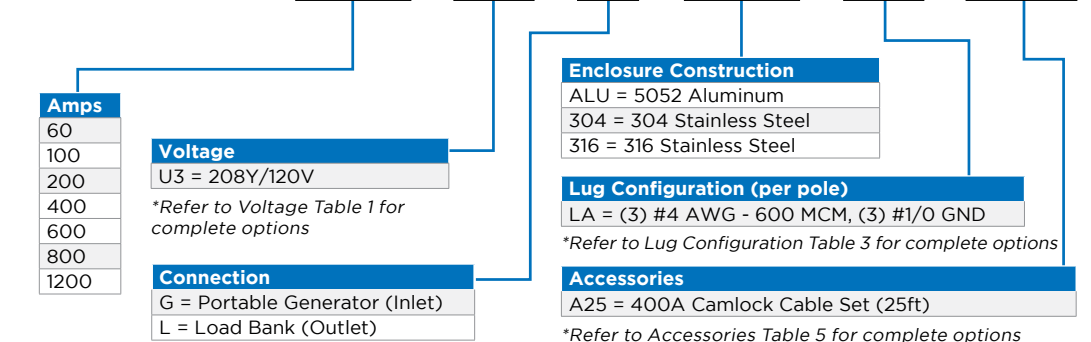
- › 30"H x 24"W x 12"D (100A - 250A)
- › 42"H x 30"W x 24"D (400A)
- › 60"H x 36"W x 24"D (600A - 1200A)

FFCC-D4

- › 42"H x 30"W x 24"D (200A - 400A)
- › 60"H x 36"W x 24"D (800A - 1200A)



FFCC-DX - 800 - U3 - G - ALU - LA - A25



FFCC-P1

PADMOUNT CONNECTION CABINET 1200A-4000A (CAMLOCK CONNECTIONS)

Features:

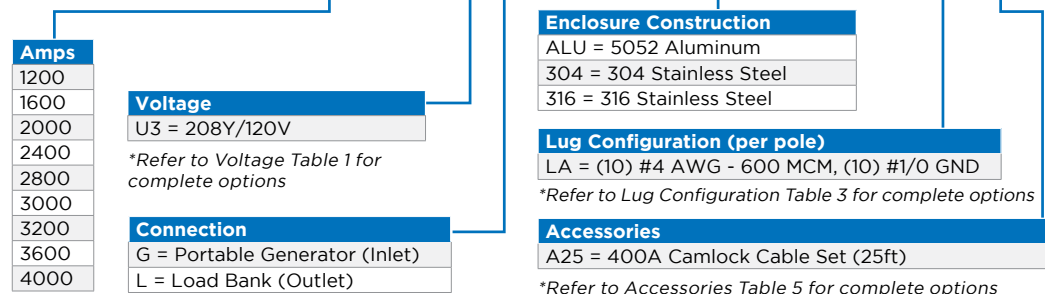
- › Aluminum or stainless steel construction
- › Type 3R weatherproof enclosure
- › Padmount design
- › Colour coded camlock receptacles
- › Mechanical lugs for facility connections as per standard lug kits
- › Configurable for Generator (Inlet) or Load Bank (Outlet)
- › Rated up to 600VAC
- › cULus Listed

Dimensions:

- › 78"H x 45"W x 38"D (1200A - 3200A)
- › 78"H x 60"W x 38"D (3600A - 4000A)



FFCC-P1 - 3200 - U3 - G - ALU - LA - A25



FFCC-P2

PADMOUNT CONNECTION CABINET W/ MOLDED CASE BREAKER OR SWITCH 1200A-4000A (CAMLOCK CONNECTIONS)

Features:

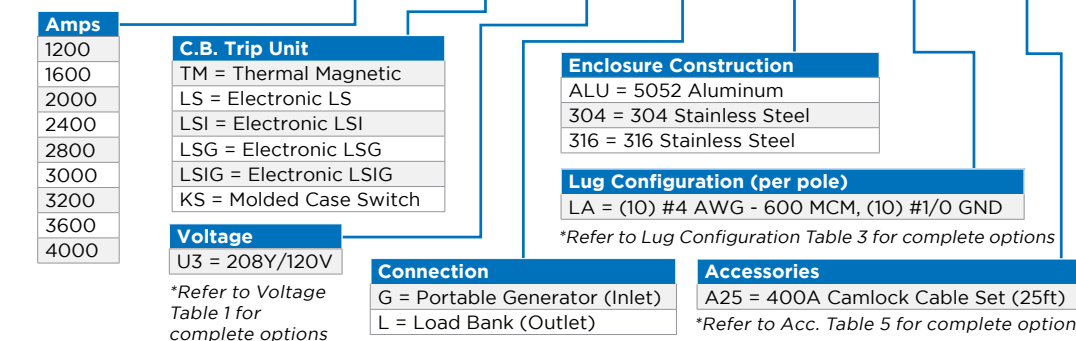
- › Aluminum or stainless steel construction
- › Type 3R weatherproof enclosure
- › Padmount design
- › Colour coded camlock receptacles
- › Mechanical lugs for facility connections as per standard lug kits
- › Molded Case Breaker or Switch
- › Configurable for Generator (Inlet) or Load Bank (Outlet)
- › Rated up to 600VAC
- › cULus Listed

Dimensions:

- › 78"H x 45"W x 38"D (1200A - 2800A)
- › 78"H x 60"W x 38"D (3000A - 4000A)



FFCC-P2 - 3200 - TM - U3 - G - ALU - LA - A25



FFCC-S1

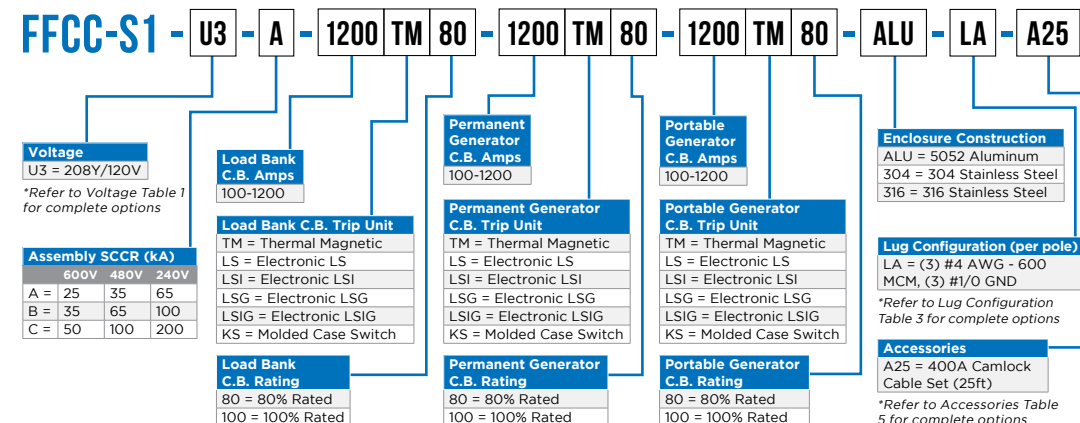
CONNECTION CABINET W/
3-WAY MANUAL TRANSFER
SWITCH 100A-1200A
(CAMLOCK CONNECTIONS)

Features:

- › Aluminum or stainless steel construction
- › Type 3R weatherproof enclosure
- › Wall mount design
- › 3-way manual transfer switch
- › Interlocked switches prevent cross-connecting power sources
- › Colour coded camlock receptacles
- › Mechanical lugs for facility connections as per standard lug kits
- › Rated up to 600VAC
- › cULus Listed & 700.3F Compliant

Dimensions:

- › 42"H x 36"W x 16"D (100A - 250A)
- › 50"H x 36"W x 16"D (300A - 400A)
- › 60"H x 48"W x 16"D (500A - 600A)
- › 60"H x 48"W x 24"D (800A - 1000A)
- › 72"H x 36"W x 24"D (1200A)
- › 4P units, consult with factory



FFCC-S2

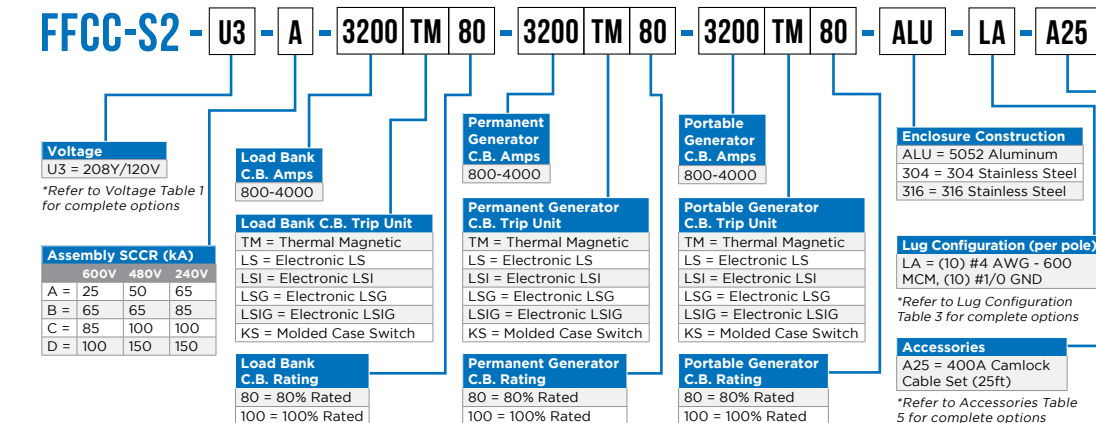
PADMOUNT CONNECTION
CABINET W/ 3-WAY MANUAL
TRANSFER SWITCH
800A-4000A
(CAMLOCK CONNECTIONS)

Features:

- › Aluminum or stainless steel construction
- › Type 3R weatherproof enclosure
- › Padmount design
- › 3-way manual transfer switch
- › Interlocked switches prevent cross-connecting power sources
- › Colour coded camlock receptacles
- › Mechanical lugs for facility connections as per standard lug kits
- › Rated up to 600VAC
- › cULus Listed & 700.3F Compliant

Dimensions:

- › 72"H x 36"W x 24"D (800A)
- › 90"H x 75"W x 24"D (1200A - 2000A)
- › 90"H x 100"W x 36"D (2400A - 2800A)
- › 90"H x 140"W x 36"D (3000A - 4000A)
- › 4P units, consult with factory



SURE POWER LOAD BANK CONNECTION

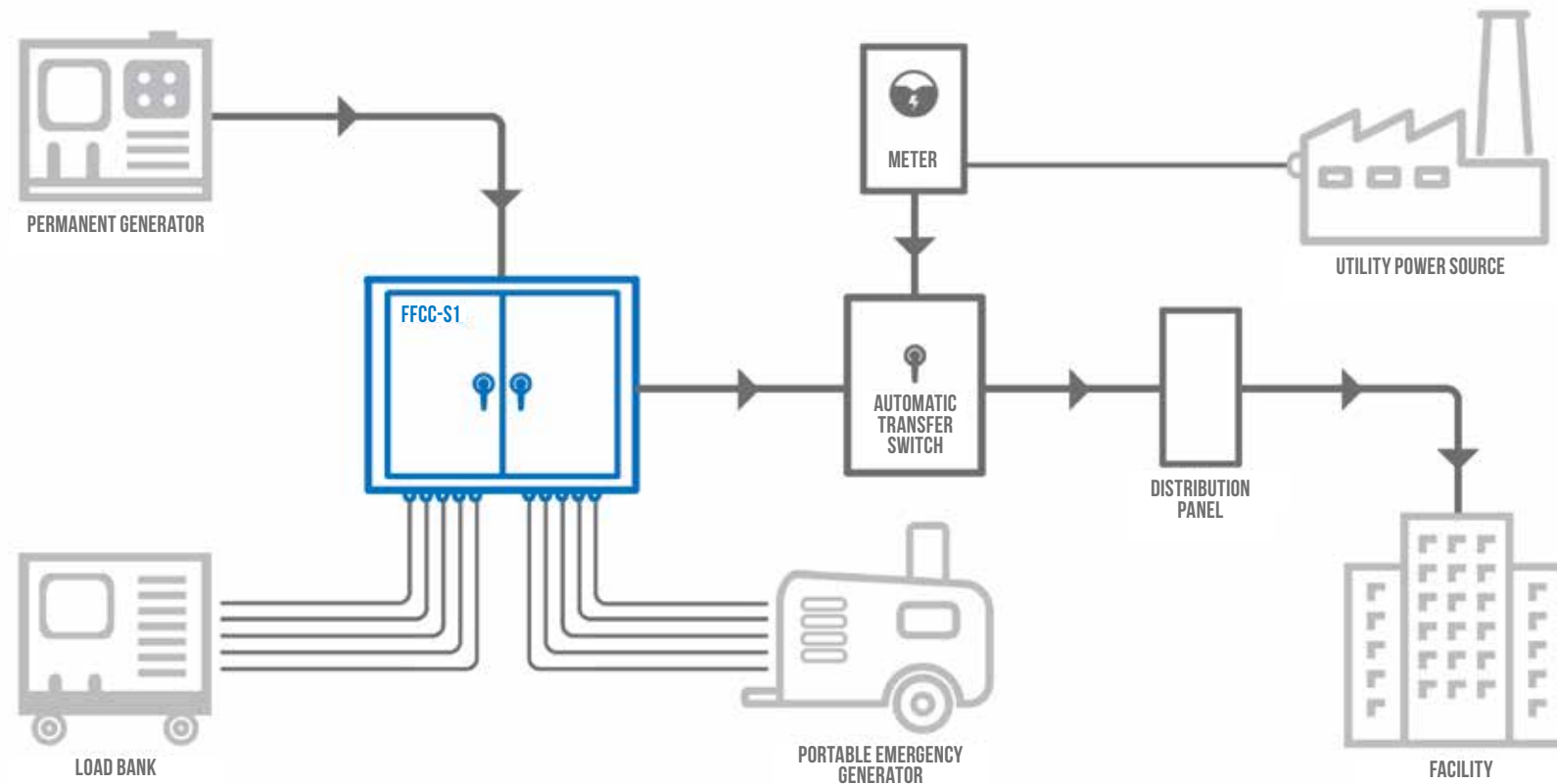
The FFCC-S1/S2 Series 3-Way Manual Transfer Switch (MTS) Connection Cabinets (CC) allow safe selection between either a Permanent Generator and Load Bank, Permanent Generator and Automatic Transfer Switch, or Automatic Transfer Switch and Emergency Generator.

Load bank testing typically leaves critical loads vulnerable to a loss in power as the permanent generator is disconnected from the system during testing. The 3-Way MTS CCs allow critical loads to still be backed up in the case of a utility power outage as it gives the ability to have a portable emergency generator tied into the system through the 3-Way MTS CC.

The 3-Way MTS CCs also provide significant cost reductions. The time required to get a load bank test or portable emergency generator set-up is drastically reduced as the unit provides colour coded camlock connectors for quick and easy installation.

Applications include:

- › Airports
- › Hospitals
- › Wastewater Treatment
- › Care Homes
- › Financial Institutions
- › Data Centers
- › Industrial Sites



FFIS-C3

WALLMOUNT INSTREAM CONNECTION CABINET W/ SHUNT TRIP BREAKER 100A-1200A (CAMLOCK CONNECTIONS)

Features:

- › Aluminum or stainless steel construction
- › Type 3R weatherproof enclosure
- › Wallmount design
- › Shunt trip breaker trips on gen run command
- › Line status indicators
- › Load bank auto timer
- › Colour coded camlock receptacles
- › Mechanical lugs for facility connections as per standard lug kits
- › Rated up to 600VAC
- › cULus Listed

Dimensions:

- › 42"H x 30"W x 24"D (100A - 200A)
- › 60"H x 36"W x 24"D (400A - 800A)
- › 72"H x 36"W x 30"D (1200A)



FFIS-C3 - 800 - TM - U3 - L - ALU - LA - A25

Amps
100
200
400
600
800
1200

Voltage
U3 = 208Y/120V

*Refer to Voltage Table 1 for complete options

C.B. Trip Unit
TM = Thermal Magnetic
LS = Electronic LS
LSI = Electronic LSI
LSG = Electronic LSG
LSIG = Electronic LSIG
KS = Molded Case Switch

Connection
L = Load Bank (Outlet)
GL = Portable Generator (Inlet) & Load Bank (Outlet)

Enclosure Construction
ALU = 5052 Aluminum
304 = 304 Stainless Steel
316 = 316 Stainless Steel

Lug Configuration (per pole)
LA = (3) #4 AWG - 600 MCM, (3) #1/0 GND

*Refer to Lug Configuration Table 3 for complete options

Accessories
A25 = 400A Camlock Cable Set (25ft)

*Refer to Accessories Table 5 for complete options

FFIS-P2

PADMOUNT INSTREAM CONNECTION CABINET W/ SHUNT TRIP BREAKER 1200A-4000A (CAMLOCK CONNECTIONS)

Features:

- › Aluminum or stainless steel construction
- › Type 3R weatherproof enclosure
- › Padmount design
- › Shunt trip breaker trips on gen run command
- › Line status indicators
- › Load bank auto timer
- › Colour coded camlock receptacles
- › Mechanical lugs for facility connections as per standard lug kits
- › Rated up to 600VAC
- › cULus Listed

Dimensions:

- › 78"H x 45"W x 38"D (1200A - 2800A)
- › 78"H x 60"W x 38"D (3000A - 4000A)



FFIS-P2 - 3200 - TM - U3 - L - ALU - LA - A25

Amps
1200
1600
2000
2400
2800
3000
3200
3600
4000

C.B. Trip Unit
TM = Thermal Magnetic
LS = Electronic LS
LSI = Electronic LSI
LSG = Electronic LSG
LSIG = Electronic LSIG
KS = Molded Case Switch

Enclosure Construction
ALU = 5052 Aluminum
304 = 304 Stainless Steel
316 = 316 Stainless Steel

Lug Configuration (per pole)
LA = (10) #4 AWG - 600 MCM, (10) #1/0 GND

*Refer to Lug Configuration Table 3 for complete options

Voltage
U3 = 208Y/120V

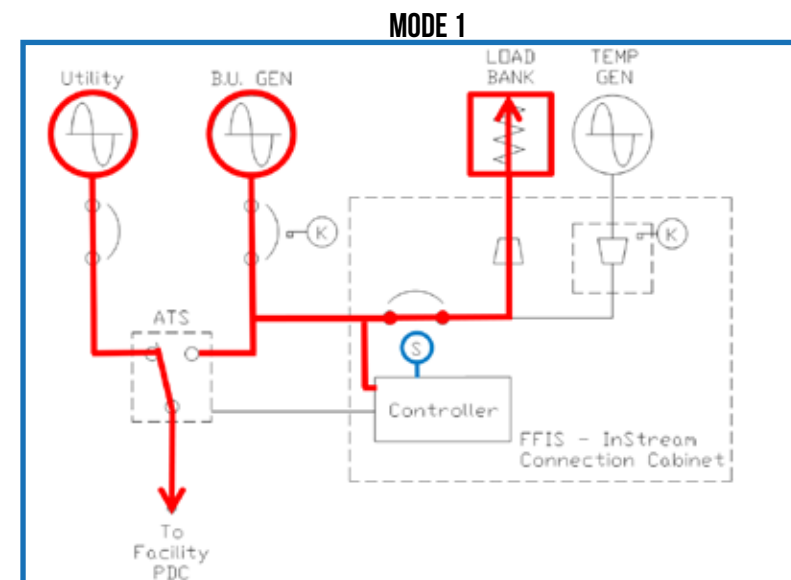
*Refer to Voltage Table 1 for complete options

Connection
L = Load Bank (Outlet)
GL = Portable Generator (Inlet) & Load Bank (Outlet)

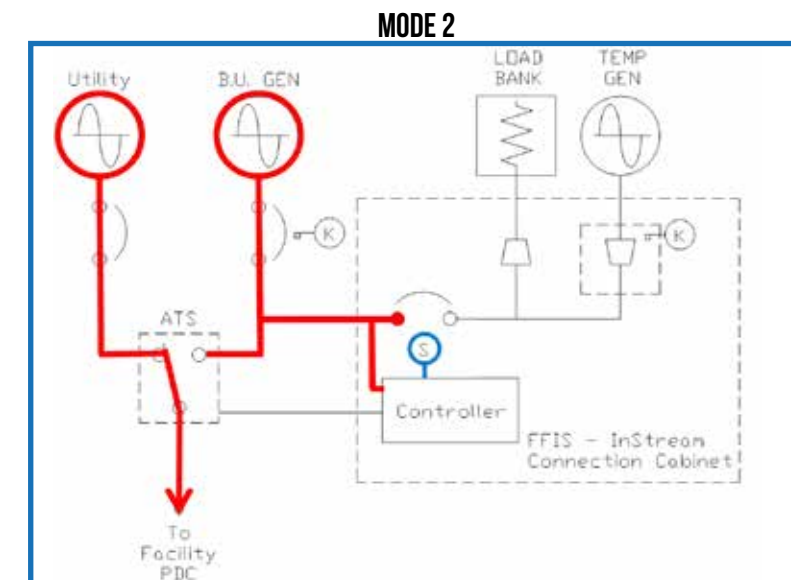
Accessories
A25 = 400A Camlock Cable Set (25ft)

*Refer to Acc. Table 5 for complete options

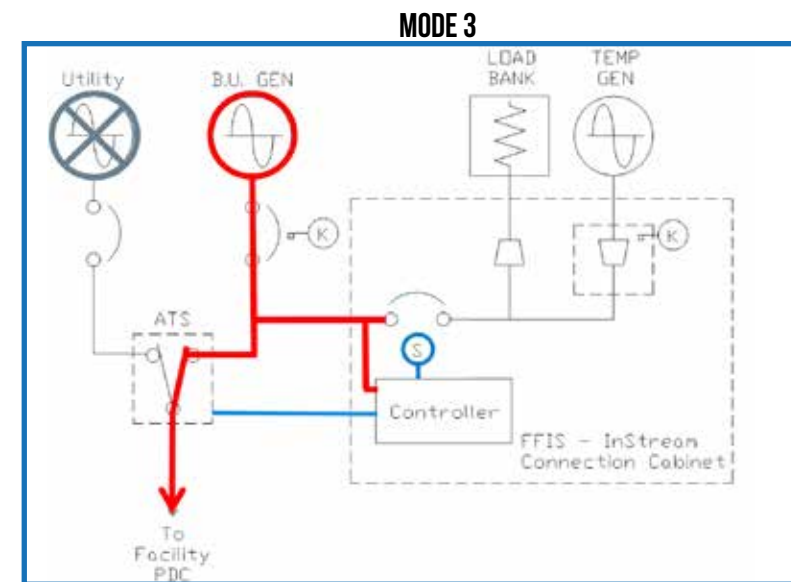
FFIS MODES OF OPERATION



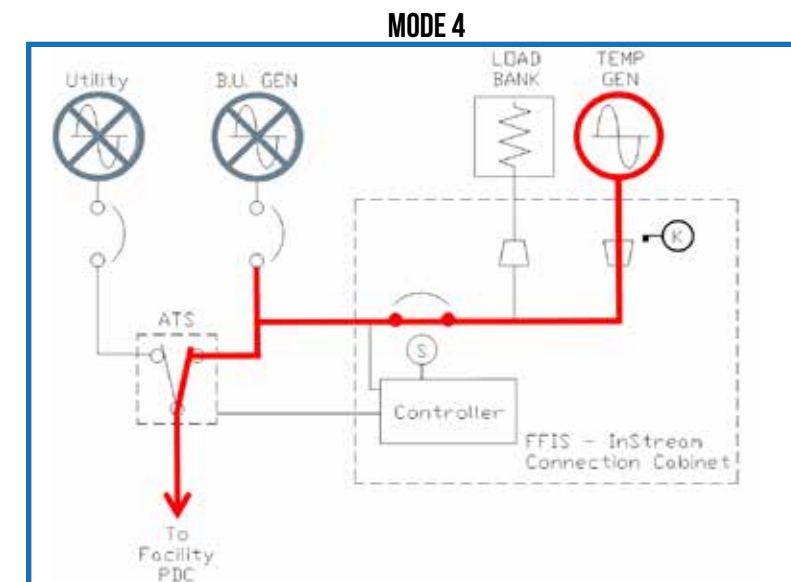
OPERATOR IS CONDUCTING LOAD BANK TESTING (VIA BU GENERATOR)



LOAD BANK TESTING CONCLUDED (TIMER FINISHED)



UTILITY FAILURE DURING LOAD BANK TESTING (LB SHUNT TRIPPED)



UTILITY FAILURE & BACKUP GEN OFFLINE (ATS SWITCHES TO TEMP GEN)

FFIS vs 3-WAY

COMPARISON OF FFIS TO A CONVENTIONAL 3-WAY SOLUTION

Similarities:

- › Both comply with 700.3(f) standards

Differences:

- › FFIS is half the size and 20-35% the cost savings of a 3-Way solution
- › FFIS is easier to retrofit to existing facilities (less cabling and connections)
- › 3-Way solution allows both a Back Up Generator connection & Load Bank testing to be done simultaneously.
- › FFIS capable of utilizing one connection at a time (Back Up Gen or Load Bank).



FFIS

Part Numbers:

- › FFIS-C3
- › FFIS-P2

FFIS-C3 Dimensions:

- › 42"H x 30"W x 24"D (100A - 200A)
- › 60"H x 36"W x 24"D (400A - 800A)
- › 72"H x 36"W x 30"D (1200A)

FFIS-P2 Dimensions:

- › 78"H x 45"W x 38"D (1200A - 2800A)
- › 78"H x 60"W x 38"D (3000A - 4000A)



3-WAY SOLUTION

Part Numbers:

- › FFCC-S1
- › FFCC-S2

FFCC-S1 Dimensions:

- › 42"T x 36"W x 16"D (100A - 600A)
- › 68"T x 48"W x 25"D (800A - 1000A)
- › 72"T x 36"W x 24"D (1200A)

FFCC-S2 Dimensions:

- › 72"T x 36"W x 24"D (800A)
- › 90"T x 75"W x 24"D (1200A - 2000A)
- › 90"T x 100"W x 36"D (2400A - 2800A)
- › 90"T x 140"W x 36"D (3000A - 4000A)

FFTS-M2N

MANUAL TRANSFER SWITCH NON-FUSED 100A-4000A (LUG CONNECTIONS)

Features:

- › Steel or Aluminum construction
- › Type 3R weatherproof enclosure
- › Wall mount or free standing design
- › Non-fused manual transfer switch
- › Breaker based switch available
- › Pilot light indication showing normal/emergency supply selection (optional)
- › Pad-lockable operating handle
- › Mechanical line and load as per standard lug kits
- › Rated up to 600VAC
- › cULus Listed

Dimensions:

- › 36"H x 30"W x 16"D (100A - 200A)
- › 60"H x 36"W x 24"D (400A - 1200A)
- › 78"H x 60"W x 38"D (1200A - 4000A)



FFTS-M2N - 800 - V3 - CRS - LA - A25

Amps
100 - 4000

Voltage

V3 = 208Y/120V

*Refer to Voltage Table 2 for complete options

Enclosure Construction

CRS = Cold Rolled Steel
ALU = 5052 Aluminum

Lug Configuration (per pole)

LA = (3) #4 AWG - 600 MCM, (3) #1/0 GND

*Refer to Lug Configuration Table 3 for complete options

Accessories

A25 = 400A Camlock Cable Set (25ft)

*Refer to Accessories Table 5 for complete options

FFTS-M2F

MANUAL TRANSFER SWITCH
FUSED 100A-4000A
(LUG CONNECTIONS)

Features:

- › Steel or Aluminum construction
- › Type 3R weatherproof enclosure
- › Wall mount or free standing design
- › Fused manual transfer switch
- › Breaker based switch available
- › Pilot light indication showing normal/emergency supply selection (optional)
- › Pad-lockable operating handle
- › Mechanical line and load as per standard lug kits
- › Rated up to 600VAC
- › cULus Listed

Dimensions:

- › 36"H x 30"W x 16"D (100A - 200A)
- › 60"H x 36"W x 24"D (400A - 1200A)
- › 78"H x 60"W x 38"D (1600A - 4000A)



FFTS-M2F - 800 - V3 - CRS - LA - A25

Amps
100 - 4000

Voltage
V3 = 208Y/120V
**Refer to Voltage Table 2 for complete options*

Enclosure Construction
CRS = Cold Rolled Steel
ALU = 5052 Aluminum

Lug Configuration (per pole)
LA = (3) #4 AWG - 600 MCM, (3) #1/0 GND
**Refer to Lug Configuration Table 3 for complete options*

Accessories
A25 = 400A Camlock Cable Set (25ft)
**Refer to Accessories Table 5 for complete options*

TABLE 1 - VOLTAGE (CAMLOCK CONNECTIONS)												
Voltage	USA						CANADA					
	Code	Camlock Colour Guide					Code	Camlock Colour Guide				
		G	N	A	B	C		G	N	A	B	C
120/240V	U1	●	○	●	●		C1	●	○	●	●	
240V	U2	●		●	●	●	C2	●		●	●	●
208Y/120V	U3	●	○	●	●	●	C3	●	○	●	●	●
480Y/277V	U4	●	○	●	●	●	CU4	●	○	●	●	●
480V	U5	●		●	●	●	CU5	●		●	●	●
600Y/347V							C4	●	○	●	●	●
600V							C5	●		●	●	●

TABLE 2 - VOLTAGE (LUG CONNECTIONS)	
Voltage	Code
120/240V (1PH + N + G)	V1
240V (3PH + G)	V2
208Y/120V (3PH + N + G)	V3
480Y/277V (3PH + N + G)	V4
480V (3PH + G)	V5
600Y/347V (3PH + N + G)	V6
600V (3PH + G)	V7

TABLE 3 - LUG CONFIGURATION (PER POLE)			
Amps	Option LA	Option LB	Option LC
60A	(1) #6 AWG - 250 MCM, (1) #2 GND	(1) #4 AWG - 600 MCM, (1) #1/0 GND	(1) 300 - 800 MCM, (1) #2/0 GND
100A	(1) #6 AWG - 250 MCM, (1) #2 GND	(1) #4 AWG - 600 MCM, (1) #1/0 GND	(1) 300 - 800 MCM, (1) #2/0 GND
200A	(1) #6 AWG - 250 MCM, (1) #2 GND	(1) #4 AWG - 600 MCM, (1) #1/0 GND	(1) 300 - 800 MCM, (1) #2/0 GND
400A	(2) #6 AWG - 250 MCM, (2) #2 GND	(1) #4 AWG - 600 MCM, (1) #1/0 GND	(1) 300 - 800 MCM, (1) #2/0 GND
600A	(2) #6 AWG - 250 MCM, (2) #2 GND	(2) #4 AWG - 600 MCM, (2) #1/0 GND	(1) 300 - 800 MCM, (1) #2/0 GND
800A	(3) #4 AWG - 600 MCM, (3) #1/0 GND	(2) 300 - 800 MCM, (2) #2/0 GND	(2) 500 - 1000 MCM, (2) #2/0 GND
1200A	(4) #4 AWG - 600 MCM, (4) #1/0 GND	(3) 300 - 800 MCM, (3) #2/0 GND	(3) 500 - 1000 MCM, (3) #2/0 GND
1600A	(5) #4 AWG - 600 MCM, (5) #1/0 GND	(4) 300 - 800 MCM, (4) #2/0 GND	(4) 500 - 1000 MCM, (4) #2/0 GND
2000A	(6) #4 AWG - 600 MCM, (6) #1/0 GND	(5) 300 - 800 MCM, (5) #2/0 GND	(5) 500 - 1000 MCM, (5) #2/0 GND
2400A	(8) #4 AWG - 600 MCM, (8) #1/0 GND	(6) 300 - 800 MCM, (6) #2/0 GND	(6) 500 - 1000 MCM, (6) #2/0 GND
2800A	(9) #4 AWG - 600 MCM, (9) #1/0 GND	(8) 300 - 800 MCM, (8) #2/0 GND	(7) 500 - 1000 MCM, (7) #2/0 GND
3000A	(9) #4 AWG - 600 MCM, (9) #1/0 GND	(8) 300 - 800 MCM, (8) #2/0 GND	(7) 500 - 1000 MCM, (7) #2/0 GND
3200A	(10) #4 AWG - 600 MCM, (10) #1/0 GND	(9) 300 - 800 MCM, (9) #2/0 GND	(8) 500 - 1000 MCM, (8) #2/0 GND
3600A	(11) #4 AWG - 600 MCM, (11) #1/0 GND	(10) 300 - 800 MCM, (10) #2/0 GND	(9) 500 - 1000 MCM, (9) #2/0 GND
4000A	(12) #4 AWG - 600 MCM, (12) #1/0 GND	(11) 300 - 800 MCM, (11) #2/0 GND	(9) 500 - 1000 MCM, (9) #2/0 GND

* For custom lug sizes, specify when ordering

TABLE 4 - UL LISTINGS

Model/Standard	A1	A2	A3	CLC	B1	B2	C1	C2	C3	C4	P1	P2	S1	S2	FFIS	M2N	M2F
UL 1008	✓	✓	✓	✓	✓	✓	✓	✓	✓	✓	✓	✓	✓	✓	✓	✓	✓
UL 1773				✓		✓											
UL 891	✓	✓	✓		✓		✓	✓	✓	✓	✓	✓	✓	✓	✓	✓	✓

TABLE 5 - ACCESSORIES (A1 to C2)

Model/Code	A1	A2	A3	CLC	B1	B2	C1	C2
AXX = 400A Camlock Cable Set (XX = FT)	✓	✓	✓	✓	✓	✓	✓	✓
AA = Camlock Snap Covers	✓	✓	✓				✓	✓
AB = Custom Powder Coat Colour	✓	✓	✓	✓	✓	✓	✓	✓
AC = Heater W/ Stat	✓	✓	✓	✓	✓	✓	✓	✓
AD = GFCI Receptacle	✓	✓	✓		✓		✓	✓
AE = Key Interlock	✓	✓	✓		✓		✓	✓
AF = Terminal Strip	✓	✓	✓	✓	✓	✓	✓	✓
AG = Phase Sequence Monitor	✓	✓	✓				✓	✓
AH = Power Meter	✓	✓	✓				✓	✓
AI = Micro-Switch	✓	✓	✓	✓	✓	✓	✓	✓
AJ = Leg Stand Set	✓	✓	✓	✓	✓	✓	✓	✓

TABLE 5 - ACCESSORIES (C3 to M2F)

Model/Code	C3	C4	P1	P2	S1	S2	FFIS	M2N	M2F
AXX = 400A Camlock Cable Set (XX = FT)	✓	✓	✓	✓	✓	✓	✓	✓	✓
AA = Camlock Snap Covers	✓		✓	✓	✓	✓	✓		
AB = Custom Powder Coat Colour	✓	✓	✓	✓	✓	✓	✓	✓	✓
AC = Heater W/ Stat	✓	✓	✓	✓	✓	✓	✓	✓	✓
AD = GFCI Receptacle	✓	✓	✓	✓	✓	✓	✓		
AE = Key Interlock	✓	✓	✓	✓	✓	✓	✓	✓	✓
AF = Terminal Strip	✓	✓	✓	✓	✓	✓	✓	✓	✓
AG = Phase Sequence Monitor	✓	✓	✓	✓	✓	✓	✓	✓	✓
AH = Power Meter	✓	✓	✓	✓	✓	✓	✓	✓	✓
AI = Micro-Switch	✓	✓	✓	✓	✓	✓	✓	✓	✓
AJ = Leg Stand Set	✓	✓			✓		✓		

CAMLOCK CABLE SETS



- › Camlock cable sets come complete, in specified lengths, with camlock plugs
- › Dura-Flex Type W 2000V 4/0 Power Cable
- › Excellent resistance to acids, alkalis, chemicals, heat, flame, and moisture
- › Oil Resistant
- › -40°C to +90°C Dry
- › 90°C Wet Rating



PHASE SEQUENCE MONITOR

- › Display indicates correct or incorrect phase sequence



GFCI RECEPTACLE

- › Utility receptacles provide convenience for plugging in lights, tools, block heaters, etc.



KEY INTERLOCK PROVISION

- › Key interlock provision prevents unauthorized access to cabinet connections



CAMLOCK SNAP COVERS

- › Camlock Snap Covers provide additional protection to the camlock receptacles



TERMINAL STRIP

- › Terminal blocks mounted on DIN rail can be used for control circuits or other wiring means



INDICATOR LIGHTS

- › Indicator lights can be used for phase indication, switch status, utility and generator power status, and current sensing



MICRO-SWITCH

- › Micro-Switches can be interlocked with the door, in order to provide intrusion or interlock functionality



CABLE SETS

- › Camlock cable sets come complete, in specified lengths, with camlock plugs



200A POSI-LOK PANEL

- › 200A Rated Posi-Lok Distribution Panels offer a sequential interlock system providing quick and safe connections



POWER METER

- › Power meters provide the ability to monitor a full range of power attributes as well as revenue metering



HEATER & STAT

- › Provides heating to cabinet with temperature control



400A POSI-LOK PANEL

- › 400A Rated Posi-Lok Distribution Panels offer a sequential interlock system providing quick and safe connections

ABOUT FOXFAB

Foxfab Power Solutions was founded in 2007 as a manufacturer serving the electrical industry.

Our engineering and design teams focus on continuous innovation of UL/cUL/CSA/ETL certified control and distribution products within the outdoor power solutions market. We work closely with our partners, power and control engineering consultants, electrical distributors, contractors and end users to develop unique solutions for specific customer requirements.

Our facility is certified to UL 1008/1773/891/891-AnnexG/508A/50E and are approved to manufacture industrial control panels and generator "middleware" for critical power applications. Our engineering department provides the design expertise for control and automation, power distribution and protection and thrive on clients customization needs.

Our mission statement is to provide quality, cost effective solutions based on our customer's power requirements.

FOXFAB.COM | 1.877.468.0305



Foxfab Power Solutions

PHONE	1-877-468-0305
EMAIL	sales@foxfab.com
WEBSITE	foxfab.com
ADDRESS	2579 188 St., Surrey, BC Canada, V3Z 2A1