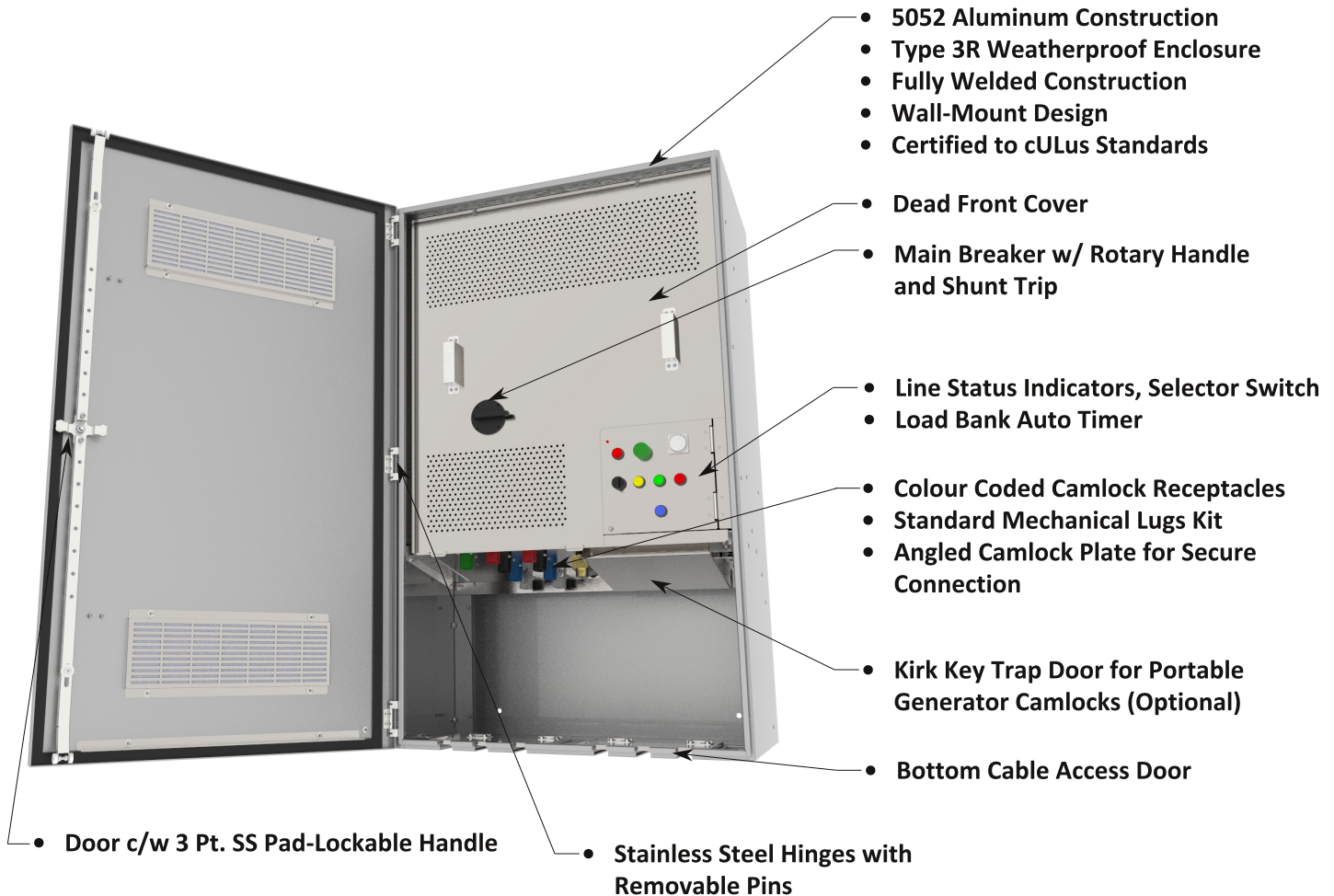


# Connection Cabinets

## FFIS-C3 Series



The FFIS-C3 Series instream load bank connection cabinet allows user to test primary generator and instantly dumps load bank connection in the event of a utility failure. Rental generator only now required for major generator rebuilds and service. Optional secondary generator connection ability complete with upstream interlock to satisfy NEC 700.3F. Assemblies are available with up to 1200A mains and are certified to cULus standards.



### Max Ratings

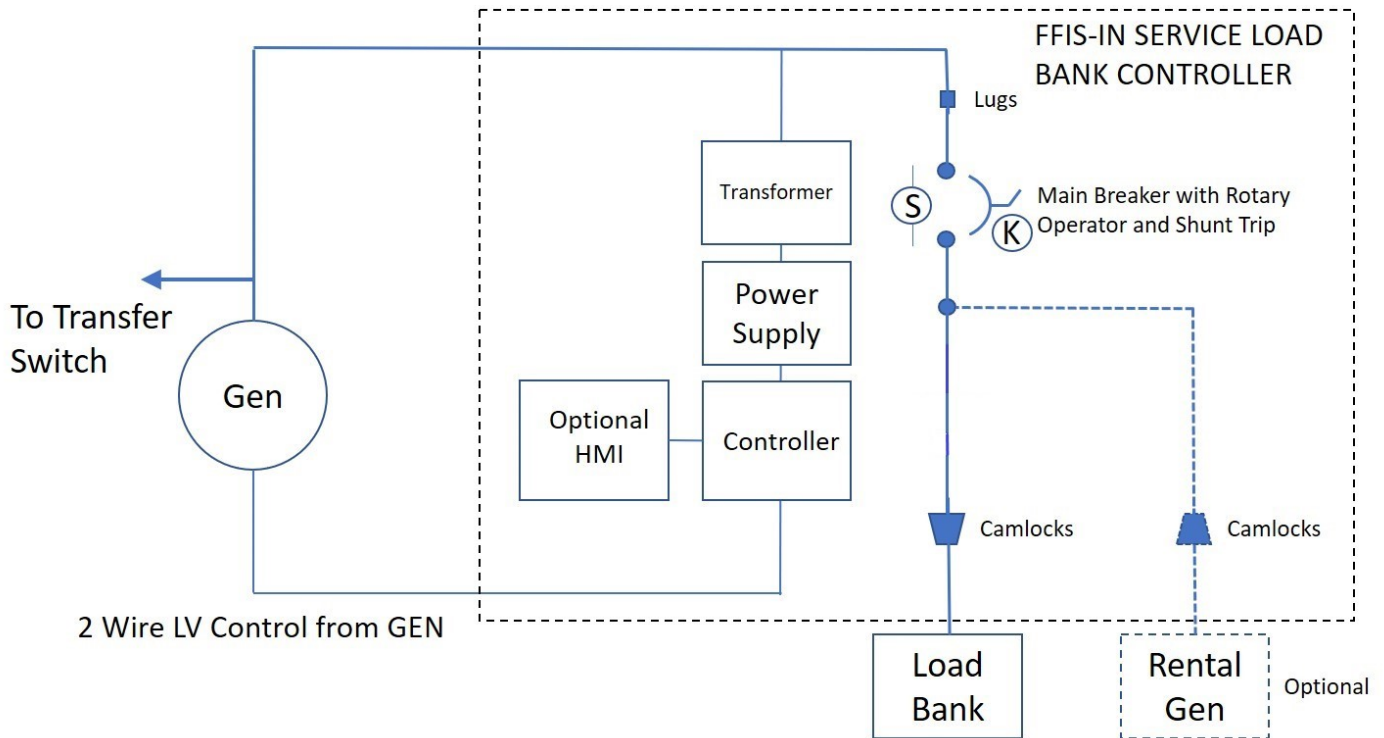
- 1200A
- 600VAC

### Dimensions

- 42"H x 30"W x 24"D (100 - 200A)
- 60"H x 36"W x 24"D (400 - 800A)
- 72"H x 36"W x 30"D (1200A)

Rev 2.0

## Application Diagram



## Basic Features

1. UL1773/1008 Generator Switchgear Compliant.
2. In line (parallel operation) without taking Generator out of service or need for back-up rental Generator.
3. Estimated switch out time 50mSec or less (3 cycles).
4. Integrated controller for Timed Generator Exercise Cycle.
5. Type 3R Enclosure with lock out and dead front. Unit can be locked and will operate with human intervention.
6. No impact to existing distribution protection (self-protected) or system coordination.
7. Can be brought online to hot system without incident.
8. Backlit LCD Status display for trouble free operation and testing.
9. No requirement for KIRK key interlocking with upstream device (for load banking).
10. CSA or cULus Certification.

## Sequence of Operation

---

### Sequence of Operation (Normal):

1. Main Breaker OFF. System Cold, Camlocks terminated to Load Bank.
2. Generator Started Manually from Generator Panel (Optionally remote Foxfab Cabinet).
3. FF Main Breaker turned on. System powers up and status shown on controller (or optional HMI).
4. System Armed and Timed or Continuous test is selected.
5. Operator starts load test via "Start Load Test" PB.
6. Test runs until operator stops or unit times out (auto time mode).
7. Main Breakers is shut off and system is cold and test is complete (all power is removed).

### Sequence of Operation (Utility Fail or ATS switched):

1. Main Breaker OFF. System Cold, Camlocks terminated to Load Bank.
2. System senses "Gen Run" command and shunts Breaker.
3. Loadbank and Camlocks are unpowered and thus failsafe.
4. Above sequence also the same during mid-test. Main Breaker disengaged instantly and full generator output available to building.

### Sequence of Operation (Optional Rental Generator Connection):

1. Foxfab Main Breaker OFF. System Cold, Camlocks terminated to Rental Generator.
2. Connection to run circuit for Rental Generator.
3. Main Generator Breaker locked off.
4. Selector switch turned to "Back-Up Power" mode.
5. Foxfab Main Breaker turned ON. Now back up system is ready when required.

## Options

---

1. Camlocks for Rental Generator c/w secondary hatch and kirk key interlock
2. Power Meter c/w CT's and shorting block
3. Grace Failsafe 3PH Power Indicator
4. User 6 Line HMI c/w Real Time Clock
5. Strip Heater c/w Thermostat (remote powered)

# Connection Cabinets

## FFIS-C3 Series



### Product Selector

